



DIAMOND AND POLISHING WHEELS FOR
GLASS PROCESSING

SPECIALISTS SINCE 1929

PROFESSIONALITY AND PASSION

Over the years, SIAPI SMARTECH has established itself in the markets throughout the world thanks to the quality of its rubber and rubber-cerium polishing wheels.

Currently, we are able to provide a complete range of high quality tools, for glass, natural and artificial stones processing, which includes cup and peripheral diamond wheels for straight-lines double-edgers and CNC machineries

DIAMOND AND POLISHING WHEELS FOR FLAT GLASS PROCESSING

Siapi Smartech Glass Division designs wheels for the most
common glass grinding machines, such as:

Bavelloni	Baudin	Lattuada
Busetti	Bystronic	Lovati
Bottero	Cms Brembana	Schiatti
Bovone Benteler	Covesa	Sun Tool
Besana	Glassline	Zafferani
Bando	Intermac	Zanetti

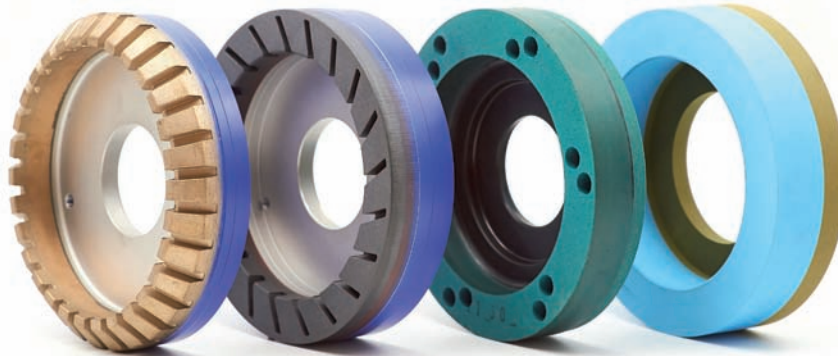
CUP DIAMOND WHEELS FOR BEVELLING ON MANUAL AND SEMI-AUTOMATIC MACHINERIES



- 100 M13 (WHEELS IN METAL BONDING)
- 200 B29 (WHEELS IN RESIN BONDING)
- 46 A28R/2, (WHEELS IN RUBBER BONDING, OF HIGH QUALITY AND LONG LIFE)

Diamond and polishing wheels, available in our warehouse, for all the manual, automatic and semi-automatic machineries.

CUP DIAMOND AND POLISHING WHEELS FOR STRAIGHT LINE AND DOUBLE EDGERS



DIAMOND AND POLISHING WHEELS FOR HIGH GLASS REMOVAL

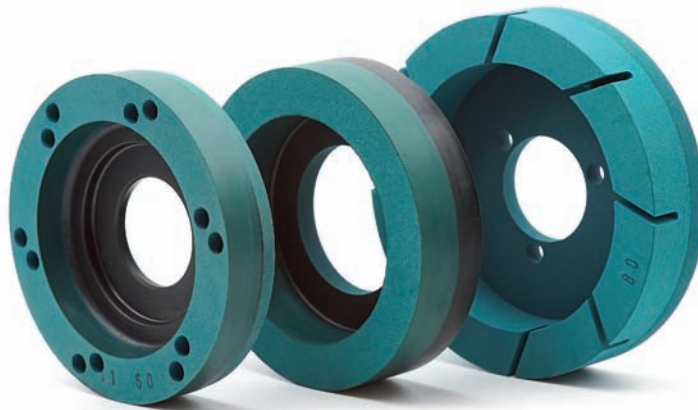
- The new range of diamond and cup polishing wheels are designed for optimal edge preparation before using rubber-cerium wheels or felt with liquid cerium.
- By correctly selecting the grain size sequence, a good finish can be obtained even without the use of cerium grinding wheels.

NEW

AR28 M1

NEW LINE OF RUBBER BONDING POLISHING WHEELS FOR DOUBLE EDGERS MACHINES

⊙ Diameters available:
Ø 130, Ø 150, Ø 170



⊙ Available grits size:
46 - 60 - 80 - 120 - 180

EXCELLENT POLISHING DEGREE, RELIABILITY, LONG-LIFE

The new AR28M1 line, thanks to the use of high quality abrasives, allows the use of 60 grit (instead of grit 46) after the diamond wheels

The advantage of using the grain 60 is that of not releasing grains able to damage or scratch the glass edge

Standard wheels available in stock for Busetti, Bottero, Bavelloni, Bentler machines.

RUBBER-CERIUM RC BLU-90

CUP WHEELS FOR STRAIGHT-LINE AND DOUBLE-EDGER MACHINERIES



⊙ Diameters available
Ø 130, Ø 150, Ø 170

EXCELLENT POLISHING DEGREE, RELIABILITY, LONG-LIFE

RC BLU-90, The new range of wheels in rubber-cerium, the most brilliant edge quality at the lowest cost per polished meter.

Manufactured with carefully selected raw materials to ensure maximum reliability and durability. Standard wheels available in stock for Machines: Busetti, Bottero, Baveloni, Bentler.

BLACKTYPE-LINE

CUP DIAMOND AND POLISHING WHEELS FOR ARRIS



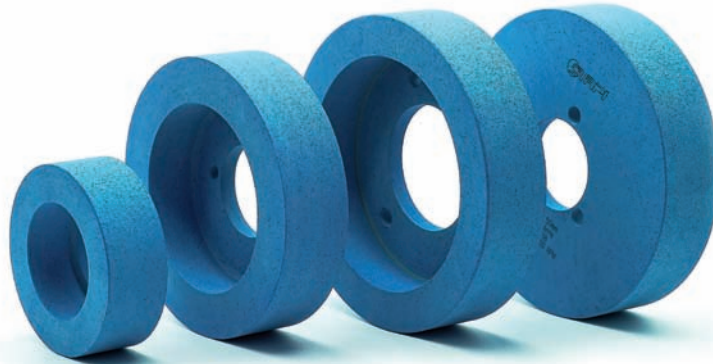
EXCELLENT POLISH DEGREE OF THE ARRIS. RELIABILITY AND LONG LIFE

BLACK TYPE is a polishing wheel in resin bonded, manufactured with a selected combination of silicon carbide, designed to be used after diamond spindles.

To obtain the best results it is recommended to combine it with the diamond resin wheel proposed by SIAPI.

Wheels available in stock in the standard dimensions for the most widespread machines.

LINE OF EFX BLUE G ARRIS CUP DIAMOND AND POLISHING WHEELS FOR ARRIS



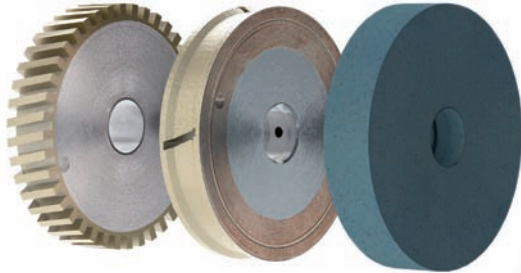
BRILLIANT FINISH ARRIS, RELIABILITY AND DURABILITY

BLU G ARRIS, resin bonded cup wheels, with a capacity to easily adapt to the machine and to guarantee a brilliant finish of the Arris. To obtain the best results it is recommended to combine it with the diamond resin wheel proposed by SIAPI.

Standard sizes available in stock, for the most common machines on the market.

CNC LINE

PERIPHERAL WHEELS FOR CNC MACHINERIES



Example: set of diamond and polishing wheels for glass tickn. 8 mm.

- Range of diamond and polishing wheels for cnc
- Excellent edge quality at the lowest cost per polished meter



EXCELLENT EDGE-FINISHING, LONG LIFE OF THE DIAMOND AND POLISHING WHEELS.

Wheels available in warehouse in standard dimensions for the most widespread machineries.

CNC LINE

DIAMOND AND POLISHING WHEELS FOR VERTICAL CNC MACHINERIES



THE BEST EDGE QUALITY AT THE LOWEST
COST PER WORKED METER.

Wheels available in warehouse in standard dimensions
for CMS, INTERMAC, DENVER, FOREL machines.



DIAMOND LINE

MILLING TOOLS FOR CNC MACHINERIES



LONG LASTING MILLING TOOLS FOR MONOLITHIC AND LAMINATED GLASS

Standard milling tools available in stock from \varnothing 10 to \varnothing 22

DRILLS LINE

DIAMOND DRILLS FOR AUTOMATIC AND CNC MACHINERIES



RANGE OF DIAMOND DRILLS WITH COUNTERSINK FOR GLASS, SUITABLE
FOR AUTOMATIC AND CNC DRILLING MACHINES.

Standard diamond drills available in stock for the most widespread machines

DIAMOND LINE

DIAMOND PERIPHERAL WHEELS FOR DOUBLE EDGERS AND CNC MACHINERIES

DIAMOND WHEELS FOR HIGH REMOVAL OF GLASS

Standard Diamond wheels available in stock



SCR/ARL28M PERIPHERAL POLISHING WHEELS FOR DOUBLE EDGERS



RUBBER BONDED PERIPHERAL POLISHING WHEELS
AR28M, SCR28, long lasting wheels, excellent edge-finishing.

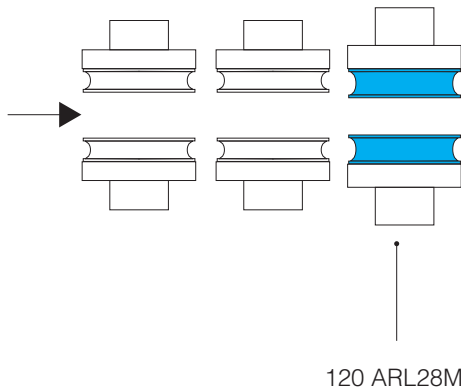
EXCELLENT EDGE-PREPARATION, RELIABILITY AND LONG-LIFE
Available grits: 46 - 60 - 80 - 120 - 180

Standard wheels available in stock for
BUSETTI, BOTTERO, BAVELLONI, BENTLER machines.

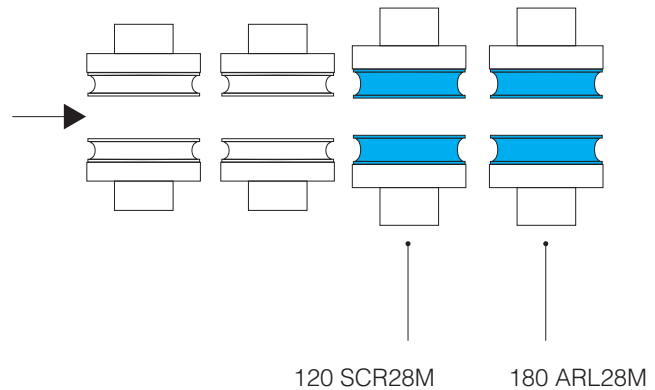
ARL28 / SCR28

LINE OF PERIPHERAL POLISHING WHEELS FOR DOUBLE EDGERS MACHINERIES

Double edger with 1 polishing spindle



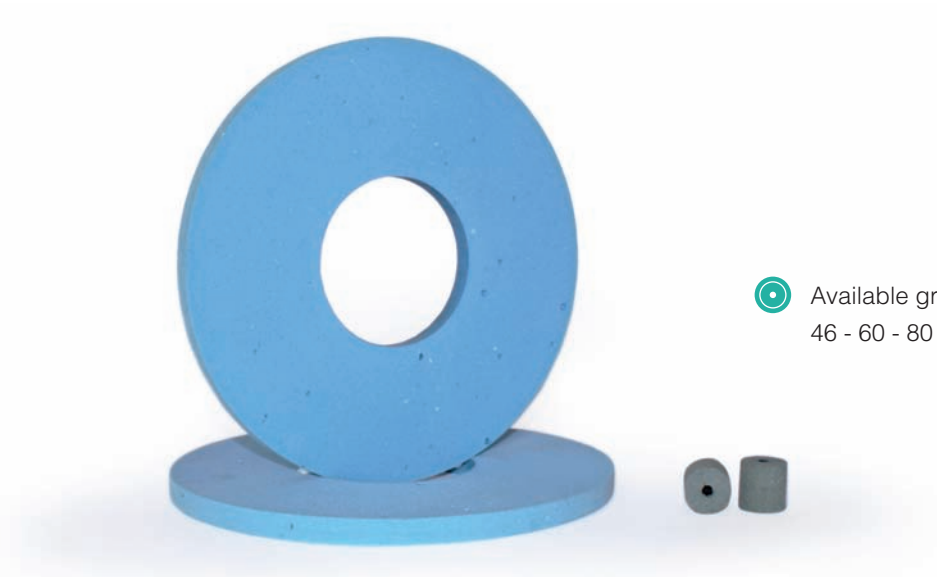
Double edger with 2 polishing spindles




Examples of application of SIAPI peripheral wheels on the most common machines.
AR28M, SCR28, long lasting wheels, optimal edge finishing.

SLK-LE LINE

PERIPHERAL WHEELS ABLE TO REMOVE THE LOW-E COATING

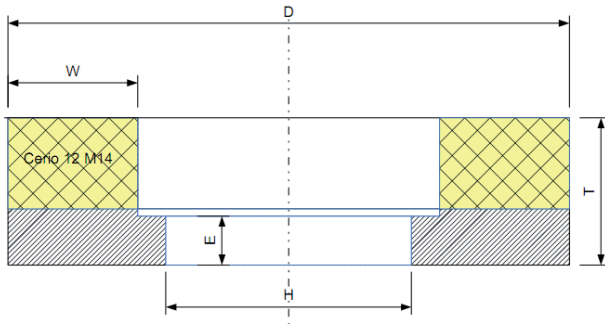


 Available grits:
46 - 60 - 80 - 120 - 180

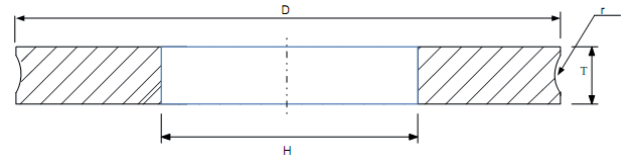
EXCELLENT EDGE-PREPARATION, RELIABILITY AND LONG-LIFE 120 SLK-LE: FOR LOW-E COATING REMOVAL

Standard wheels available in stock for Busetti, Bottero, Bavelloni, Bentler machines.

TECHNICAL INFORMATIONS



Typical Description of the Cup Wheels
 $D \times T \times H$ 150 x 35 x 70 E10 W25
Cerio 12 M14



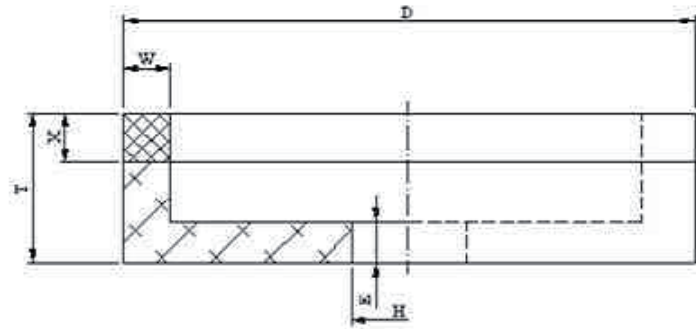
Typical Description of the Peripheral wheels
 $D \times T \times H$ 200 x 20 x 90
120 AR28 M1

TECHNICAL INFORMATIONS

GRIT SIZES

GRANULOMETRY COMPARISON TABLE

FEPA	U.S.MESH ASTM-E-11-70	ISO R 565 1972
D1181	8/9	1181/1000
D1001	9/10	1000/850
D851	20/25	850/710
D711	25/30	710/600
D601	30/35	600/500
D501	35/40	500/425
D426	40/45	425/355
D356	45/50	355/300
D301	50/60	300/250
D251	60/70	250/212
D213	70/80	212/180
D181	80/100	180/150
D151	100/120	150/125
D126	120/140	125/106
D107	140/170	106/90
D91	170/200	90/75
D76	200/230	75/63
D64	230/270	63/53
D54	270/325	53/45
D46	325/400	45/38
D39	400/500	38/25



Typical Description of a Diamond cup wheel

D x T x H 150 x 35 x 22 E12

W10 X8 181 M18

EXPORT SALES DEPARTMENT

Mr. Giuseppe Falcone
phone +39 349 860 7309
email giuseppe@rosver.com

EXPORT SALES ASSISTANT

Ms. Maria Elena Gullo
email maria@rosver.com

siapi smartech 

Rosver srl

Via Concordia 5/C6

20099 Sesto San Giovanni – Milan – Italy

Export sales department: **giuseppe@rosver.com**

Export sales assistant: **maria@rosver.com**

T. +39 02 24417219

F. +39 02 2403942

www.siapismartech.com

www.siapismartech.com